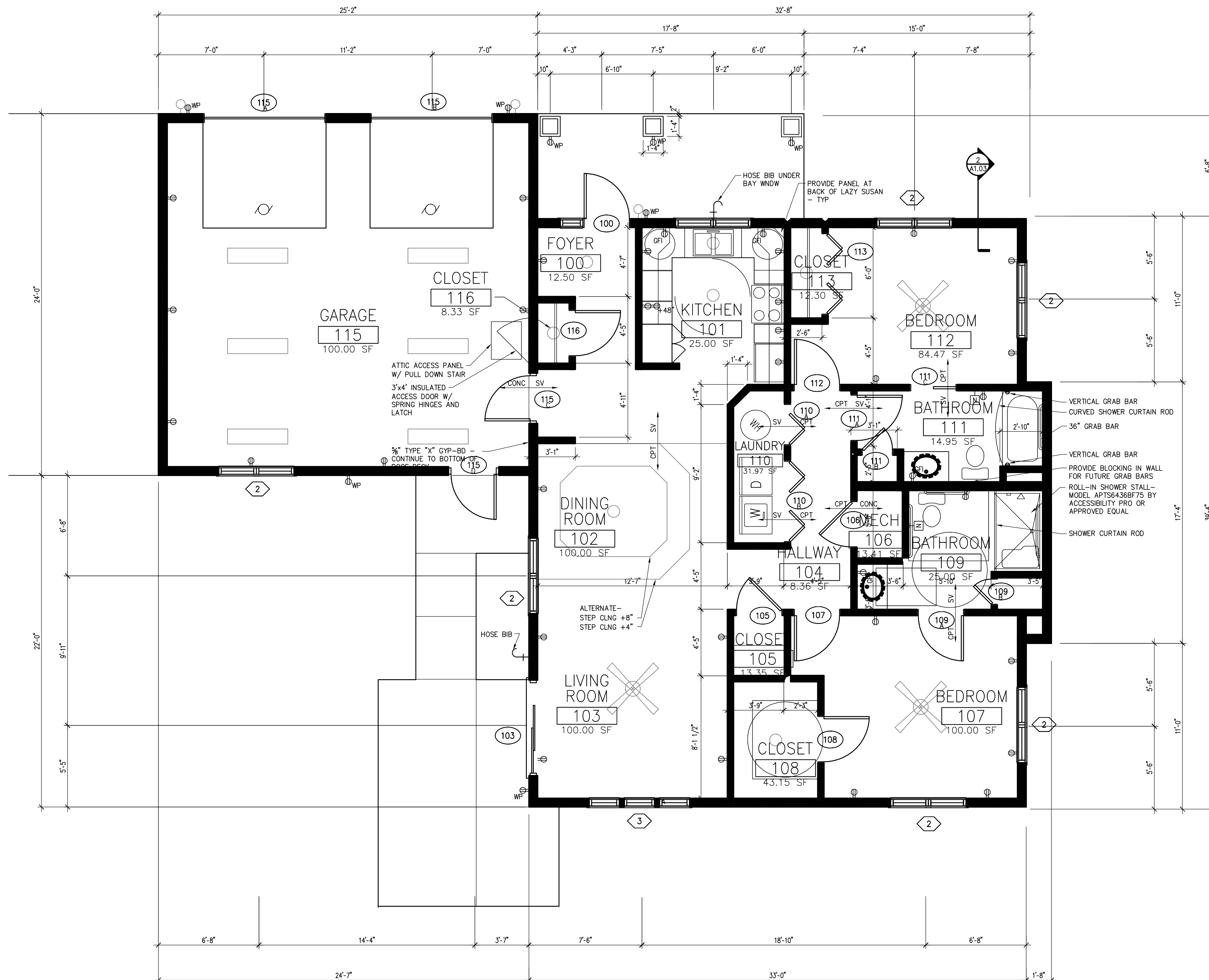


X:\Projects\110176\DWG\110176\DWG\110176-AP-01-REV1.DWG | 110176-AP-01-REV1.DWG | P:\PROJECTS\110176\DWG\110176-AP-01-REV1.DWG |
 penwinna | P:\Projects\110176\DWG\110176-AP-01-REV1.DWG | DATE: 07/15/2010 | TIME: 14:54



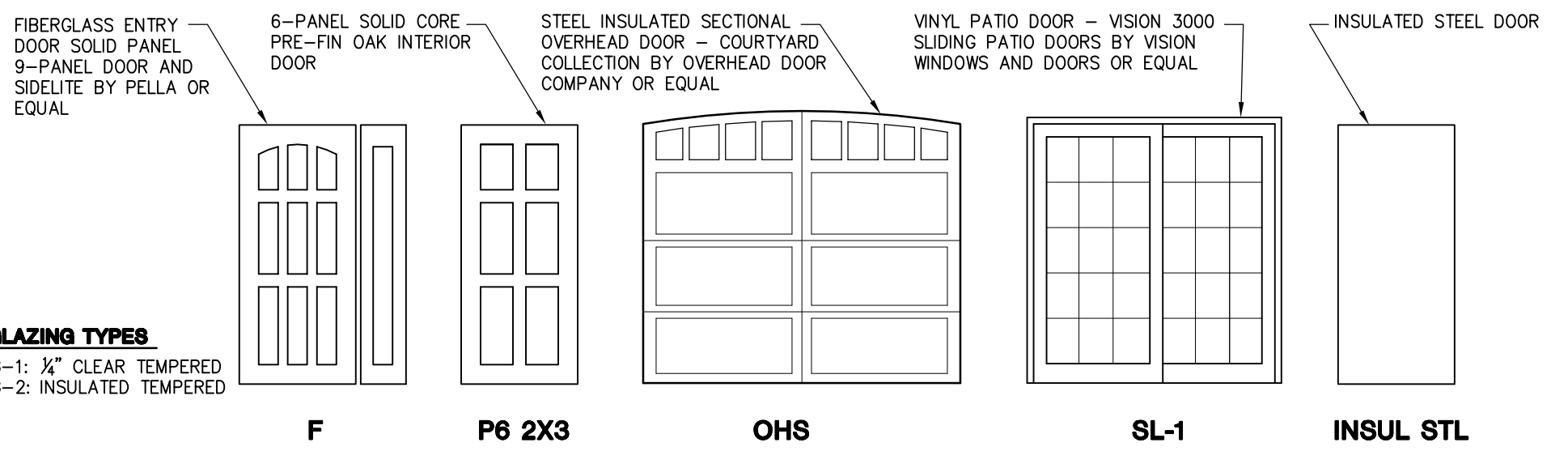
ROOM FINISH SCHEDULE										REMARKS	
ROOM NO	ROOM NAME	FLR	BASE	WALLS				CEILING			
				NORTH	SOUTH	EAST	WEST	MTRL	HT		
100	FOYER	SV	WD	PT	PT	PT	PT	PT	PT	8'-0"	
101	KITCHEN	SV	WD	PT	PT	PT	PT	PT	PT	8'-0"	
102	DINING ROOM	CPT	WD	PT	PT	PT	PT	PT	PT	8'-0"	ALTERNATE - STEP CLNG
103	LIVING ROOM	CPT	WD	PT	PT	PT	PT	PT	PT	8'-0"	
104	HALLWAY	CPT	WD	PT	PT	PT	PT	PT	PT	8'-0"	
105	CLOSET	CPT	WD	PT	PT	PT	PT	PT	PT	8'-0"	
106	MECH	CONC	WD	PT	PT	PT	PT	PT	PT	8'-0"	
107	BEDROOM	CPT	WD	PT	PT	PT	PT	PT	PT	8'-0"	
108	CLOSET	CPT	WD	PT	PT	PT	PT	PT	PT	8'-0"	
109	BATHROOM	SV	WD	PT	PT	PT	PT	PT	PT	8'-0"	
110	LAUNDRY	SV	WD	PT	PT	PT	PT	PT	PT	8'-0"	
111	BATHROOM	SV	WD	PT	PT	PT	PT	PT	PT	8'-0"	
112	BEDROOM	CPT	WD	PT	PT	PT	PT	PT	PT	8'-0"	
113	CLOSET	CPT	WD	PT	PT	PT	PT	PT	PT	8'-0"	
115	GARAGE	CONC	---	PT	PT	PT	PT	PT	PT	8'-0"	WALLS AND CEILING TO RECEIVE 5/8" GYP-BD
116	CLOSET	SV	WD	PT	PT	PT	PT	PT	PT	8'-0"	

NOTES

CPT- J & J INVISIONS - K2: COLOR TO BE SELECTED BY OWNER
 SV- LG FLOORS - NATURELIFE - COLOR TO BE SELECTED BY OWNER
 PT- BENJAMIN MOORE: WALLS: FAIRWAY OAKS- 1075
 RUSTIC TAUPE- 999
 WETHERSFIELD MOSS- HC-110
 CEILING: FRENCH WHITE- 1093
 NOTE: THESE ARE SUGGESTED COLORS-FINAL SELECTION TO BE BY OWNER

COUNTERTOPS- CORIAN: TUMBLEWEED
 BASEBOARD/ DOOR AND WINDOW TRIM- PRE-FINISHED OAK: OWNER TO SELECT PROFILE AND FINISH

DOOR AND FRAME SCHEDULE												REMARKS
DOOR NO	DOOR					FRAME		RATING	HDWR			
	WD	HT	TK	MTRL	TYPE	GLAZ	MTRL				TYPE	
100	3'-0"	6'-8"	1 3/4"	FIBER GLASS	F	G-2	WD	PRE-HUNG	--	--	NOTE 1	
103	PR 3'-0"	6'-8"	1 1/4"	VINYL	SL-1	1" INSUL	---	---	---	---	BY MFR	
105	3'-0"	6'-8"	1 3/4"	WD	P6 2X3	---	WD	PRE-HUNG	--	--	NOTE 1	
106	3'-0"	6'-8"	1 3/4"	WD	P6 2X3	---	WD	PRE-HUNG	--	--	NOTE 1	
107	3'-0"	6'-8"	1 3/4"	WD	P6 2X3	---	WD	PRE-HUNG	--	--	NOTE 1	
108	3'-0"	6'-8"	1 3/4"	WD	P6 2X3	---	WD	PRE-HUNG	--	--	NOTE 1	
109A	3'-0"	6'-8"	1 3/4"	WD	P6 2X3	---	WD	PRE-HUNG	--	--	NOTE 1	
109B	1'-8"	6'-8"	1 3/4"	WD	P6 2X3	---	WD	PRE-HUNG	--	--	NOTE 1	
110A	PR 1'-4"	6'-8"	1 3/4"	WD	P6 2X3	---	---	---	---	---	BI-FOLD DOOR, NOTE 1	
110B	4 @ 1'-4"	6'-8"	1 3/4"	WD	P6 2X3	---	---	---	---	---	BI-FOLD DOOR, NOTE 1	
111A	3'-0"	6'-8"	1 3/4"	WD	P6 2X3	---	WD	PRE-HUNG	--	--	NOTE 1	
111B	2'-0"	6'-8"	1 3/4"	WD	P6 2X3	---	WD	PRE-HUNG	--	--	NOTE 1	
111C	3'-0"	6'-8"	1 3/4"	WD	P6 2X3	---	WD	---	---	---	POCKET DOOR, NOTE 1	
112	3'-0"	6'-8"	1 3/4"	WD	P6 2X3	---	WD	PRE-HUNG	--	--	NOTE 1	
113	4 @ 1'-4"	6'-8"	1 3/4"	WD	P6 2X3	---	---	---	---	---	BI-FOLD DOOR, NOTE 1	
115A	8'-0"	7'-0"	1 3/8"	INSUL STEEL	OHS	G-2	WD	---	---	---	OVERHEAD DOOR	
115B	8'-0"	7'-0"	1 3/8"	INSUL STEEL	OHS	G-2	WD	---	---	---	OVERHEAD DOOR	
115C	3'-0"	6'-8"	1 3/4"	INSUL STL	INSUL STL	---	WD	PRE-HUNG	--	--	INSULATED STEEL DOOR, NOTE 1	
115D	3'-0"	6'-8"	1 3/4"	INSUL STL	INSUL STL	---	WD	PRE-HUNG	--	--	INSULATED STEEL ENTRY DOOR, NOTE 1	
116	3'-0"	6'-8"	1 3/4"	WD	P6 2X3	---	WD	PRE-HUNG	--	--	NOTE 1	



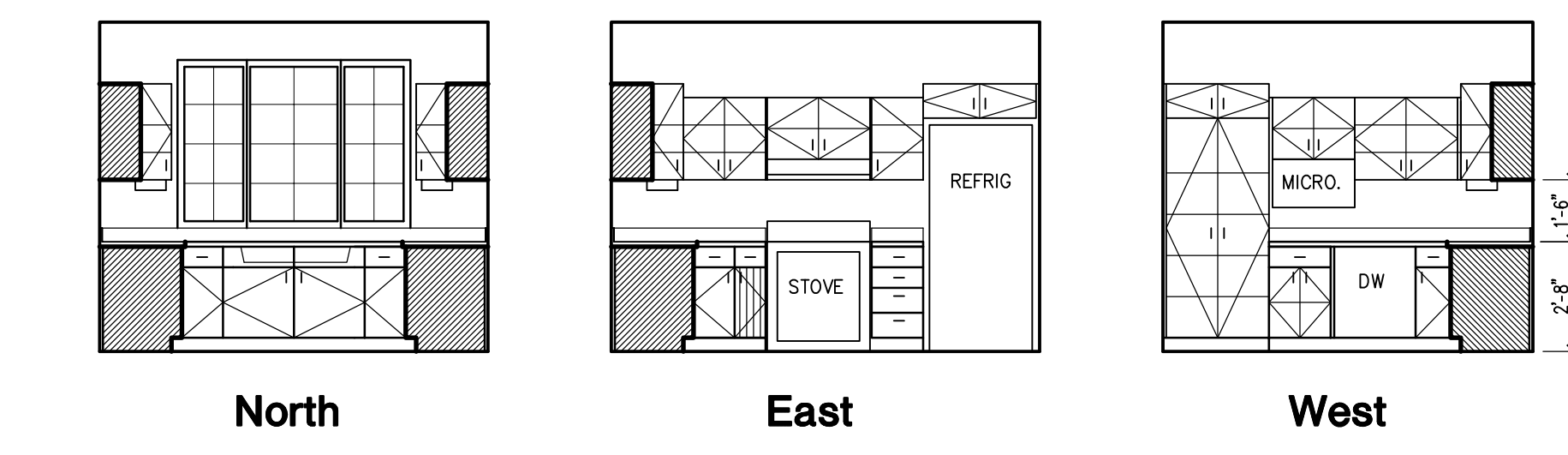
DOOR TYPES
 1/4"=1'-0"

NOTES- 1. ALL HARDWARE TO MEET THE AMERICAN WITH DISABILITIES ACT (ADA) - FINISH AND STYLE TO BE SELECTED BY OWNER

WINDOW TYPES

1. WINDOW SIZES AND PROFILES ARE BASED ON VISIONS 3000 VINYL WINDOWS
 2. GLAZING: Zo-e Shield 5 OR EQUAL
 3. ALL OPERABLE WINDOWS TO HAVE A SCREEN

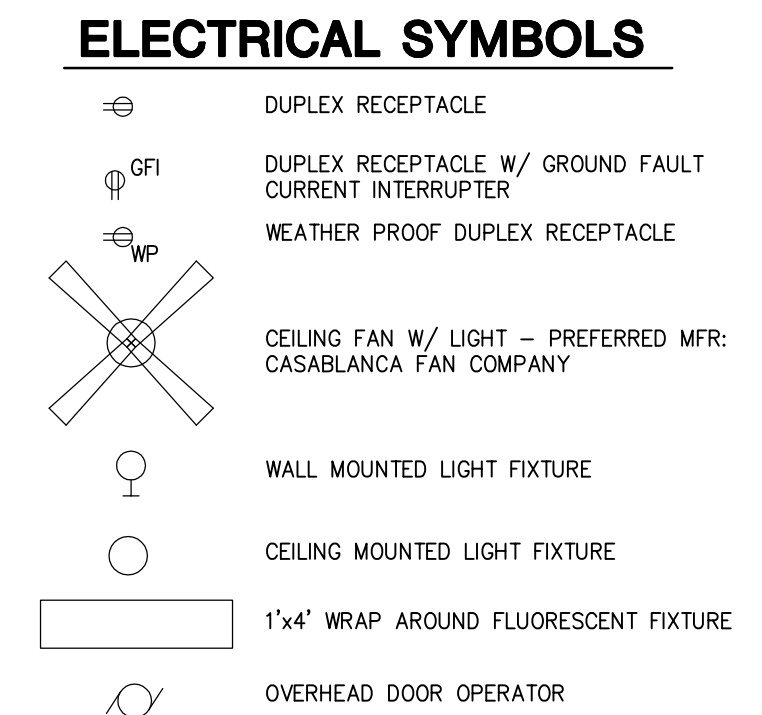
FLOOR PLAN
 1/4" = 1'-0"



KITCHEN ELEVATIONS
 1/4" = 1'-0"

NOTES

1. KITCHEN LAYOUT AND ELEVATIONS ARE SCHEMATIC ONLY. GENERAL CONTRACTOR TO WORK W/ OWNER ON FINAL LAYOUT.
 2. COUNTERTOP ELEVATION TO BE 32" AFF.
 3. ALL CABINETS TO BE SOLID WOOD CONSTRUCTION W/ SOLID OAK FACES AND SIDES - FINISH TO BE SELECTED BY OWNER.
 4. ALL SHELVES IN BASE CABINETS TO BE ROLL-OUT
 5. PROVIDE LIGHTING UNDER UPPER CABINETS.
 6. SINK BASE CABINET TO BE DESIGNED SO IT CAN BE ALTERED TO MEET THE "AMERICANS WITH DISABILITIES ACT (ADA)



REVISIONS

REV	July 14, 2010

DRAWN PEN
 APPROVED
 ISSUED FOR PRICING
 DATE 06-2-10
 FIELD BOOK